

Let's Get Together

INTRODUCTION:

The Crash Record System (CRS) was designed for only one person to enter data. As the number of users expanded, their needs diversified. There are users that have one person enter data with additional users who only view the data. The Read Only version of CRS was developed to satisfy that need.

Several larger agencies have expressed a desire to have multiple users enter data. In order to accommodate their need, Let's Get Together (LGT) was developed. LGT performs three simple tasks. They are:

1. To maintain a constant street name list among all the users of CRS.
2. To merge crash records entered by secondary users into the master CRS database, CRASH.MDB.
3. To copy the master CRASH.MDB database to the all other CRS users who keep their CRS database on an accessible server.

TERMINOLOGY:

There are several terms that will be used throughout the manual. They are:

CRASH.MDB:

CRS uses a Microsoft Access database to store its data. The name of the database is CRASH.MDB.

MASTER:

The primary CRS user who enters the majority of crash records into the database has the MASTER copy of CRASH.MDB. The location of the file, CRASH.MDB must be on a server.

SLAVES:

Additional CRS users have their own database file. Their CRASH.MDB is a SLAVE of the MASTER database file. The SLAVE database file (CRASH.MDB) can reside either on a server or an individual PC.

HOW TO USE LGT:

LGT was designed to be used in one of three different configurations. They are:

1. The MASTER version of CRASH.MDB is located on a server.
 - a. All SLAVES reside on personal PCs.
 - b. Copies of LGT are installed on each PC
2. The MASTER version of CRASH.MDB is located on a server.
 - a. All SLAVES resides on separate folders on an accessible server.
 - b. LGT is installed on the PC of the MASTER user.

3. The MASTER version of CRASH.MDB is located on the server.
 - a. All SLAVES resides on separate folders on an accessible server.
 - b. LGT is installed on the PCs who have the SLAVE copies of CRASH.MDB

USING LGT:

Once LGT is installed and initially launched, the following form will be displayed:

Street List Maintenance:

The street list is a critical component of CRS. If crashes are entered on more than one PC, the street names should be identical for all the databases. The following is the **Street List Maintenance** portion of LGT.

The following are the three **Street List Maintenance** options:

- **Import Street Names from Master CRASH.MDB:** As mentioned earlier, the database, CRASH.MDB, contains multiple database tables. One of the database tables is StreetNames. This database table contains the names of all the streets that are used by CRS.

This option will copy all the street names in the StreetNames database table from the CRASH.MDB at the MASTER location to the StreetNames database table at all the SLAVE locations.

This option is primarily used when initially setting up a SLAVE database that is empty.

- **Synchronize from Master CRASH.MDB:** This option is similar to the previous option. It is used when the SLAVE databases have been established and new streets have been entered into the MASTER StreetNames database table.
- **Bi-Directional Synchronization:** This option will copy all the street names from the StreetNames database tables from MASTER to SLAVES and from all the SLAVES to MASTER.

Choose this option if the CRS users entering data at the SLAVE locations have the permission to enter new street names.

To perform the **Street List Maintenance**, select the appropriate option and click **GO**.

Crash Data:

The principal purpose of LGT is to copy crash records from multiple sources to the main database. The following is the Crash Data portion of LGT.

Crash Data

Location of Master CRASH.MDB

Location of Slave #1 CRASH.MDB

Location of Slave #2 CRASH.MDB

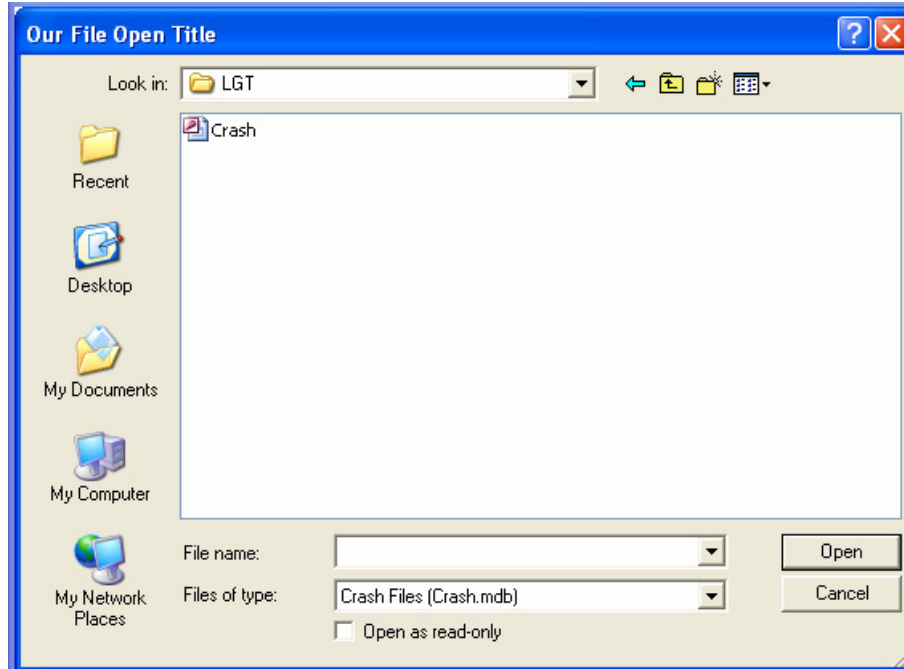
Location of Slave #3 CRASH.MDB

Location of Slave #4 CRASH.MDB

Delete all Crashes From Slave Upon Completion

Merge Crash Records Copy Master Crash.MDB to Slaves

Location of Master CRASH.MDB: The MASTER location of CRASH.MDB **MUST** be on a server. The location cannot be entered by typing. The location must be selected by clicking the **Select Folder** button. Once the **Select Folder** button has been clicked, the following dialog box will be displayed.



The defaults have been set to display CRASH.MDB. Locate the folder in which the MASTER version of CRASH.MDB is located and click **OPEN**. The location will be displayed.

Location of Slave #1 CRASH.MDB: This is the location of a SLAVE version of CRASH.MDB. The program LGT allows up to **four** SLAVES.

The location of the SLAVES can be either on a server or on an individual PC. They cannot be mixed.

If the SLAVES are to be located on individual PCs, then a copy of LGT is to be installed on each SLAVE PC. The user of each SLAVE PC must have write permission to the location on the server that contains the MASTER version of CRASH.MDB.

If the SLAVES are located on a server, the LGT is to be installed on the MASTER version of CRASH.MDB's PC.

Save Paths: Click the **Save Paths** button to save the locations of the MASTER and defined SLAVES, along with the **Street List Maintenance** option to a file. The next time LGT is launched, the values stored in the file are displayed.

Clear All Paths: Clicking the **Clear All Paths** button will clear the MASTER path and all the SLAVE paths.

Delete All Crashes On Slave Upon Completion: As previously referenced, CRASH.MDB contains multiple database tables. The database table Crashes contain all the individual crash data.

If the crash data is to be deleted from the SLAVES Crashes database table, **check** the **Delete All Crashes On Slave Upon Completion**.

Merge Crash Records: Once the street lists are synchronized and both the MASTER and SLAVES paths have been selected, clicking the **Merge** button will begin the merging process.

An informational form will be displayed showing the progress of the merging of the data. This is not a particularly speedy process. Great care was taken to process the data during the merging process.

Copy Master CRASH.MDB to Slaves: This option was created for those SLAVE users who are also CRS users. Clicking the **Copy** button will copy the Crashes database table from the MASTER CRASH.MDB to all the SLAVES.

Exit Program: Click **Exit Program** to leave LGT.